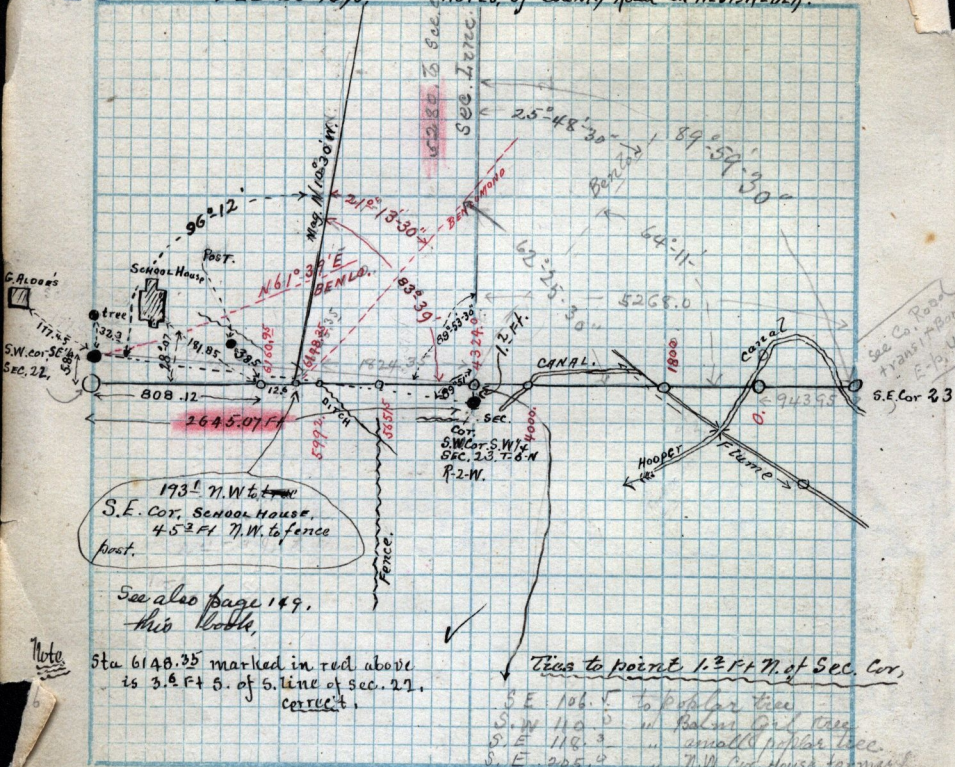


FEB-20-1890

NOTES of County Road in WEST WEBER.



See also page 149, this book.

Sta 6148.35 marked in red above is 3.5 Ft S. of S. line of Sec. 22, correct.

Ties to point 1.2 Ft N. of Sec. Cor.

- S.E. 106.4 to water tree
 - S.W. 112.0 W. Baker Oil case
 - S.E. 118.3 " small poplar tree
 - S.E. 205.9 " N.W. Cor. House formerly owned by Cynthia Pringle brick house
- Chains per inch.

Scale:

See also page 149

See also K-27-73

See H-83

the distance, by computation from the S.E. Cor. of Sec. 22, straight, to 1/4 cor. N.W. Child, Seladma on E. line of Sec. 15 = 778.3 Ft.

Washington Jenkins Co.

Al. Roston } Chairman
E. Wheeler }

